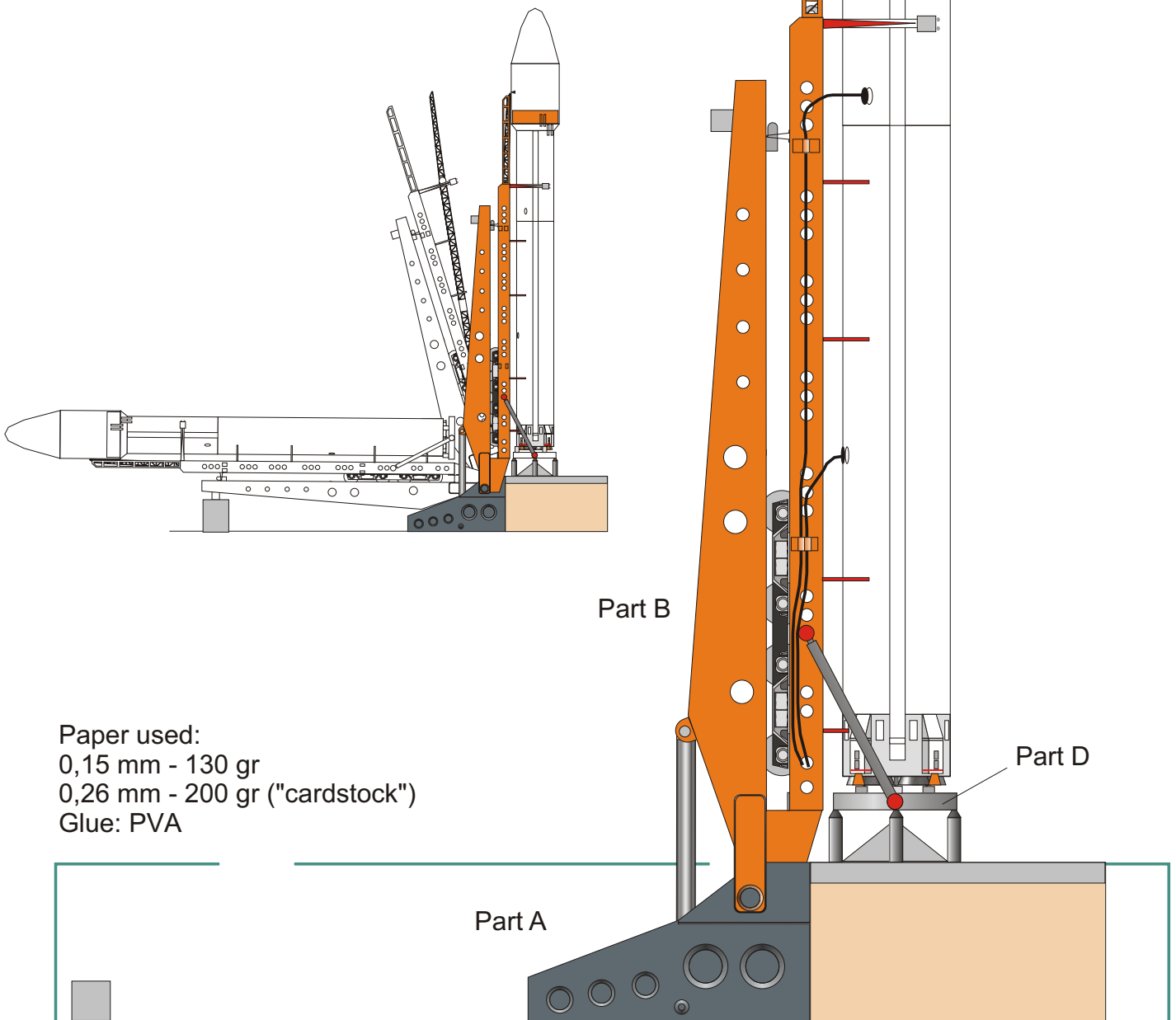


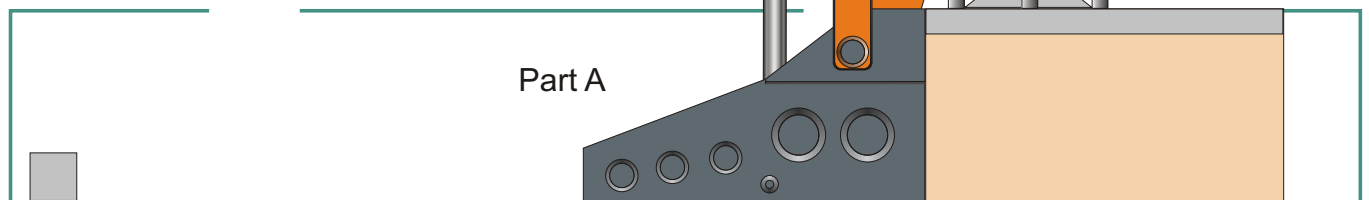
LAUNCH PAD

for Tsyklon family

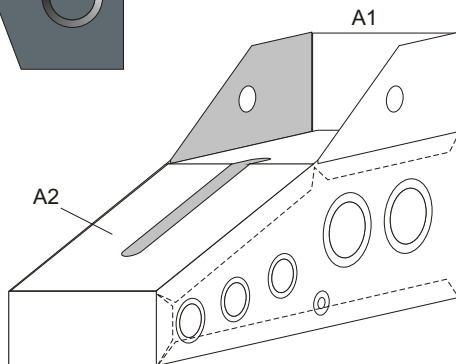
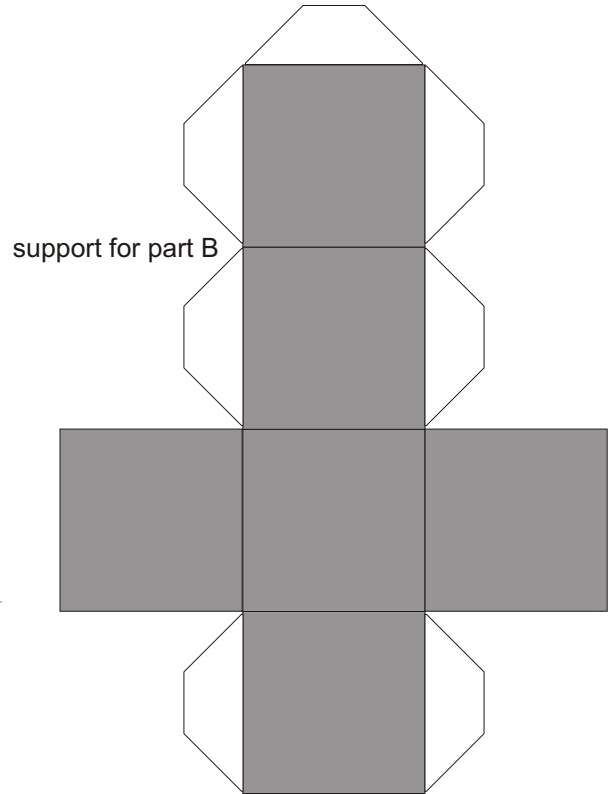
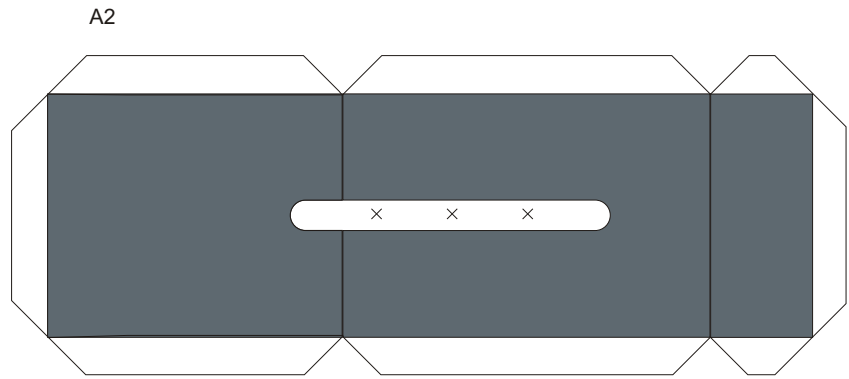
1:96 scale



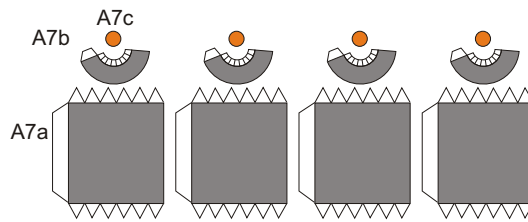
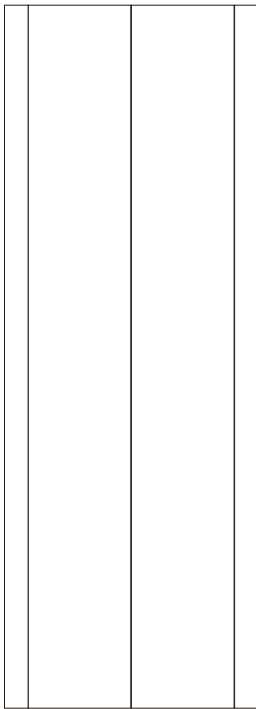
Paper used:
 0,15 mm - 130 gr
 0,26 mm - 200 gr ("cardstock")
 Glue: PVA



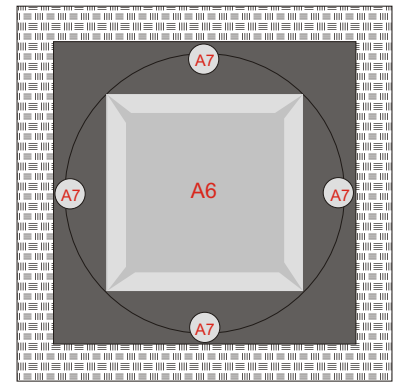
Many thanks to Joe Polchlopek for remarks and test-building!



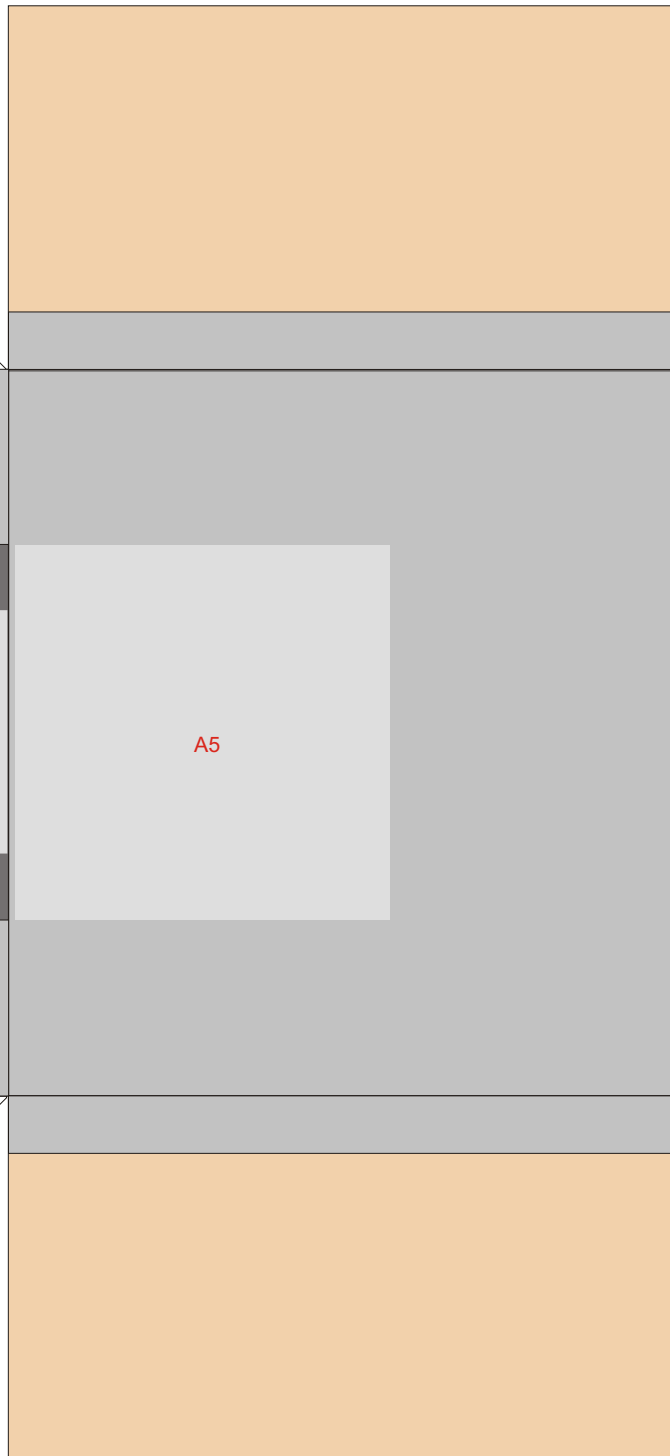
A4



A5

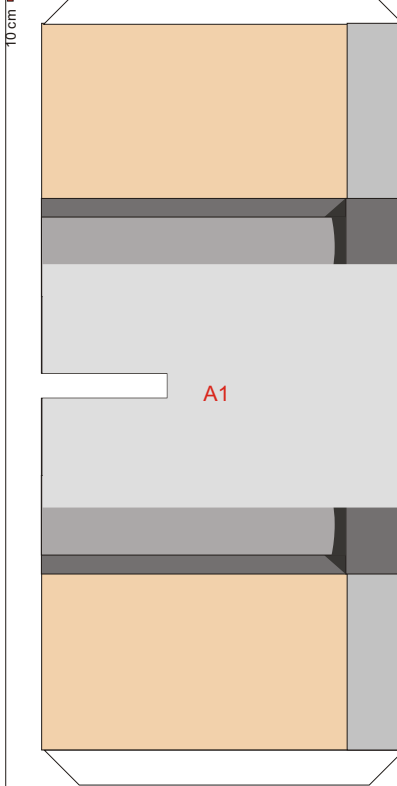


A3



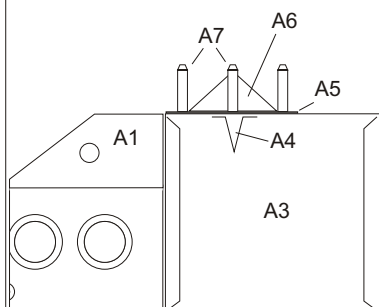
NOTE:
for correct superposition
of supports A7 with part D

glue assembled parts A5/A6/A7
onto A3 only after full assembling
of Launch Pad



A1

A5



A1

A3

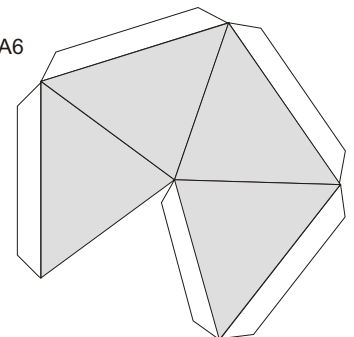
A7

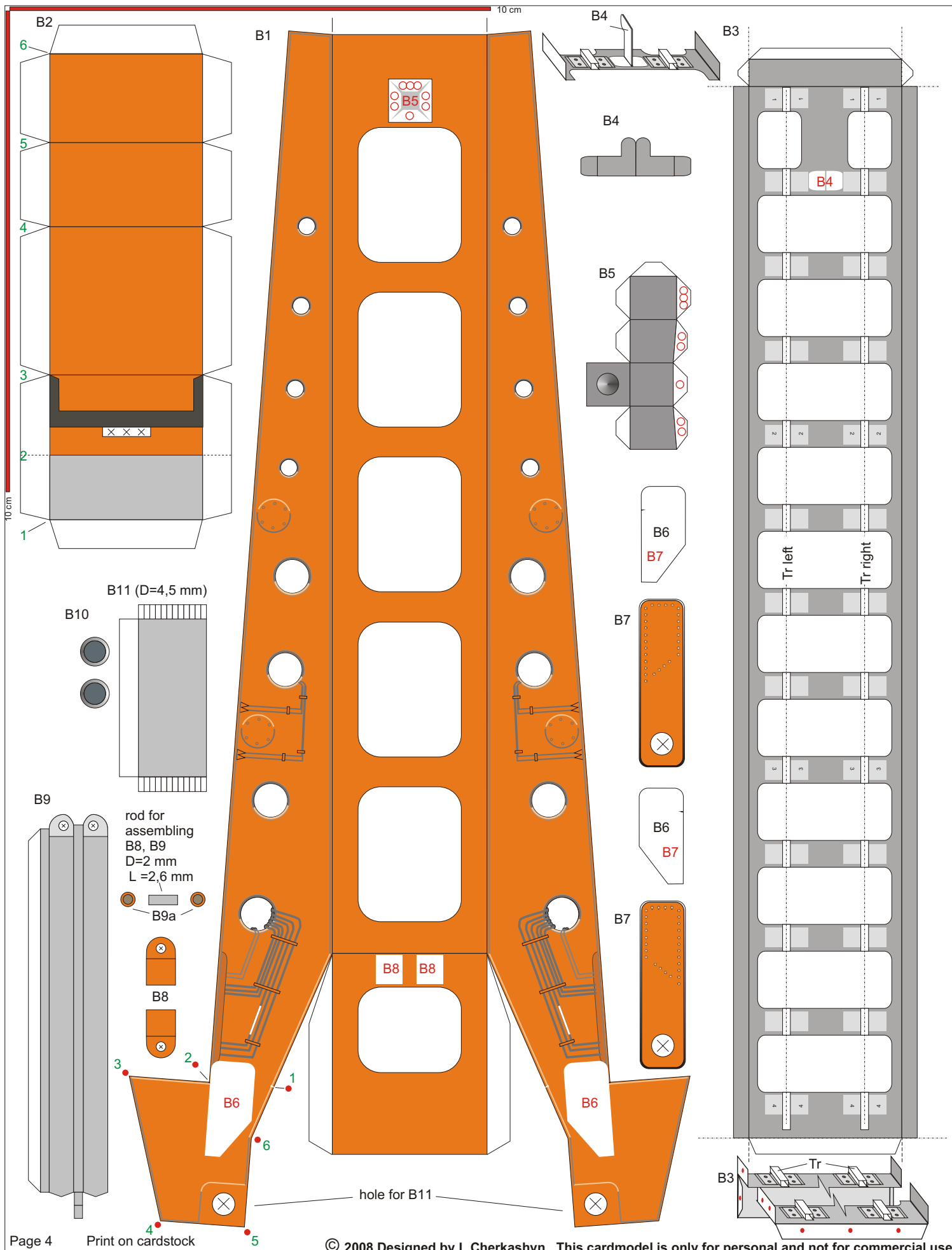
A6

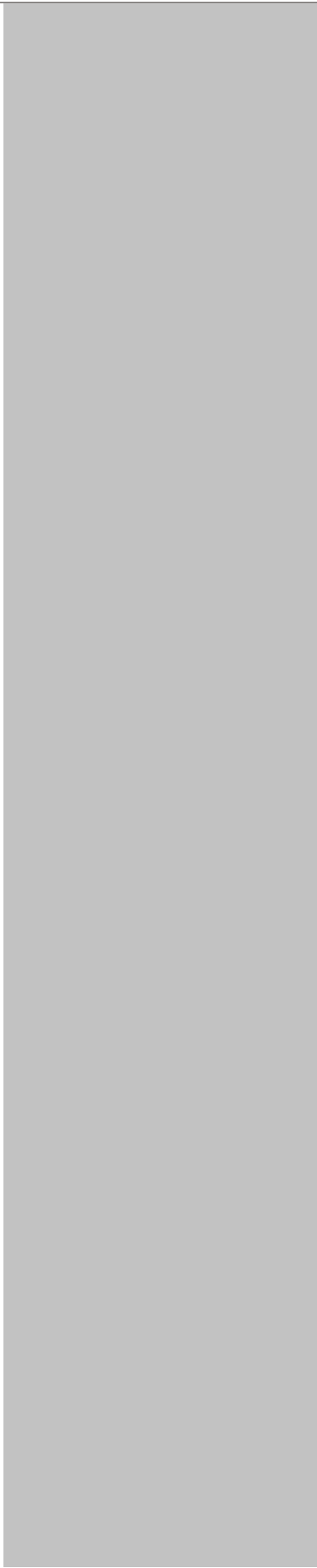
A5

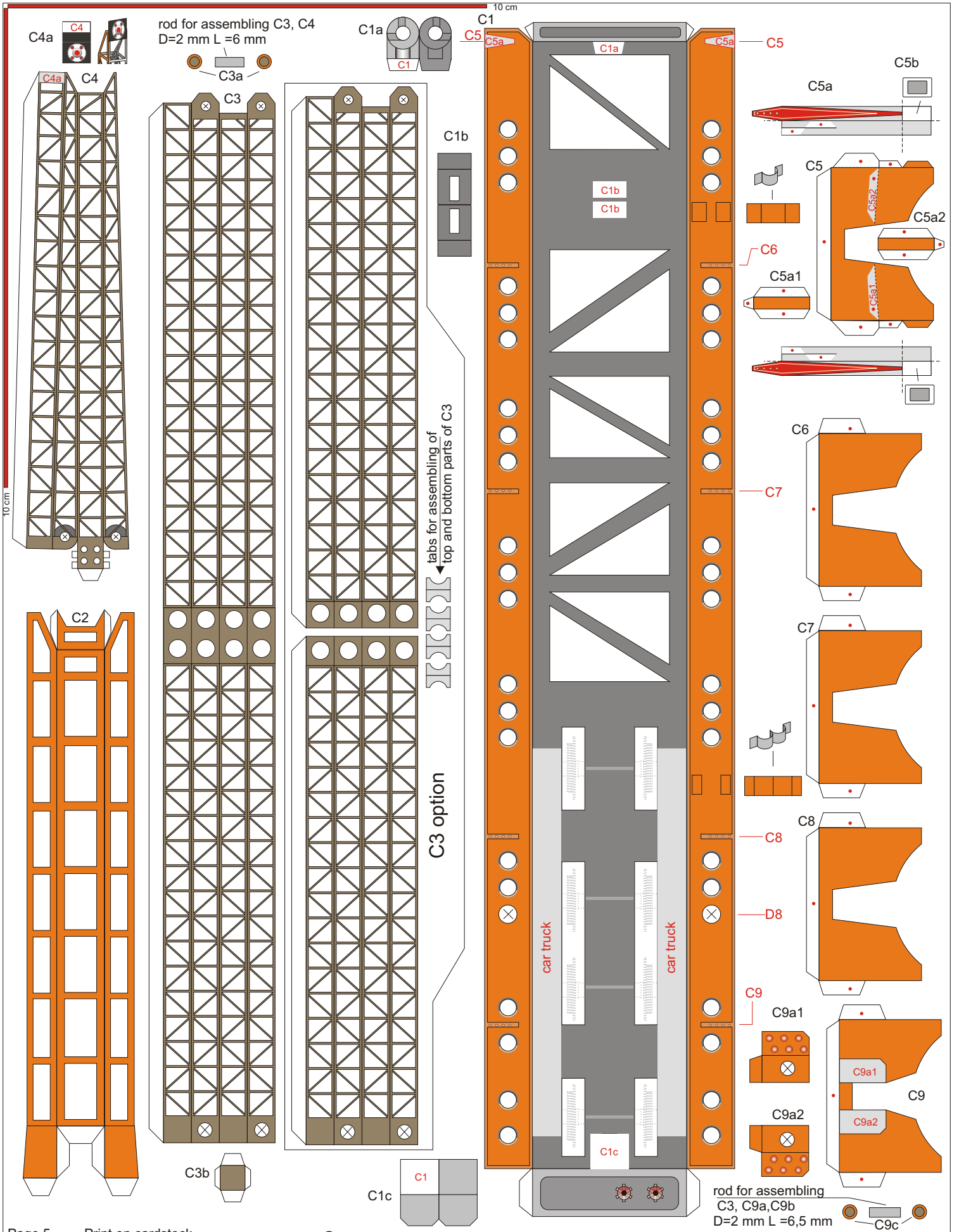
A4

A6



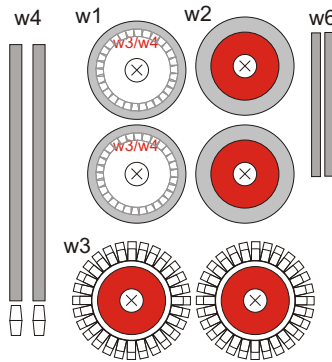
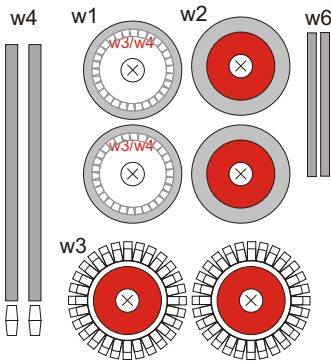
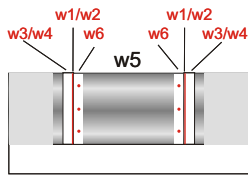
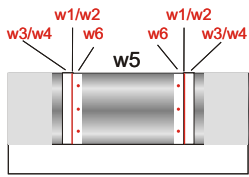
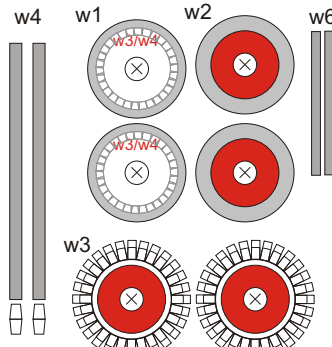
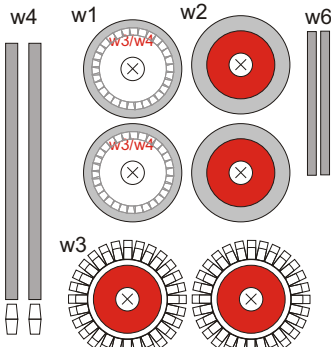
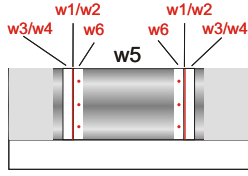
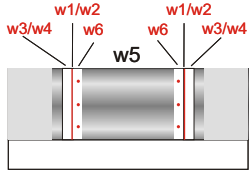
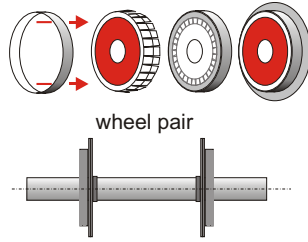




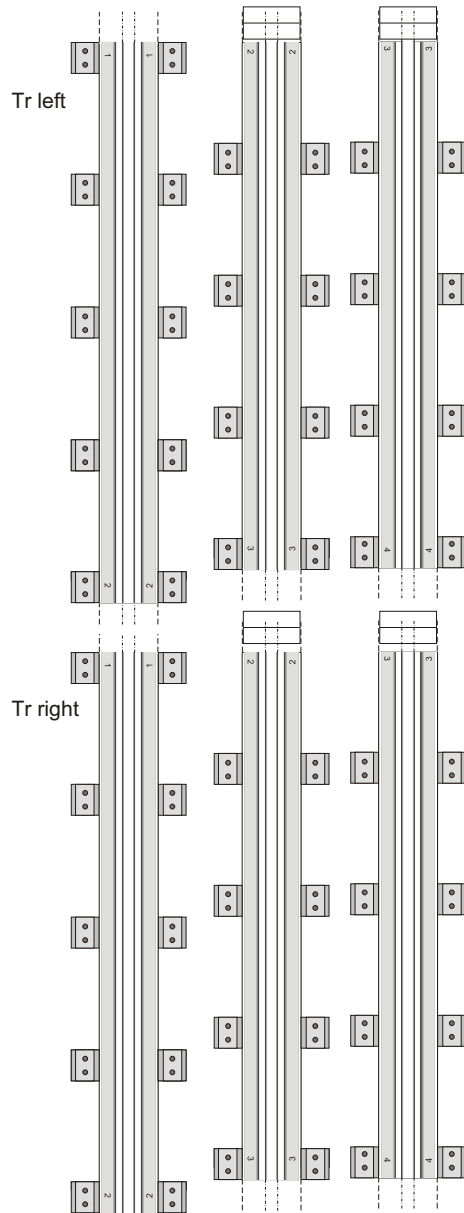
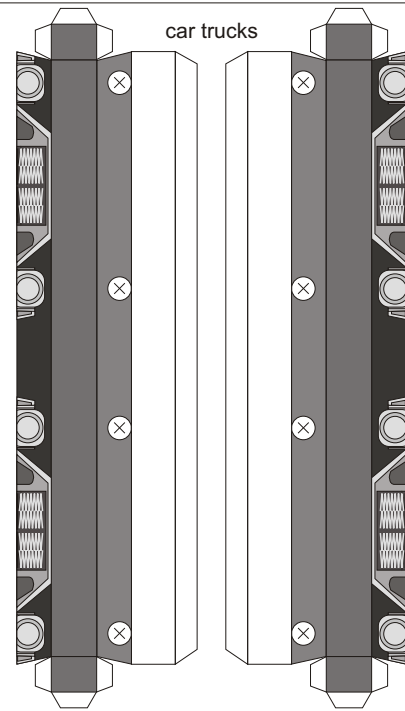
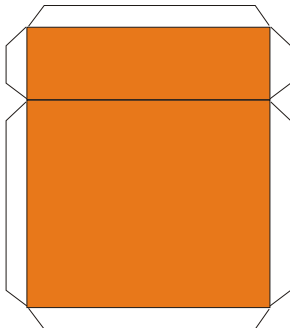


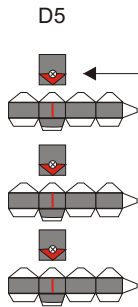
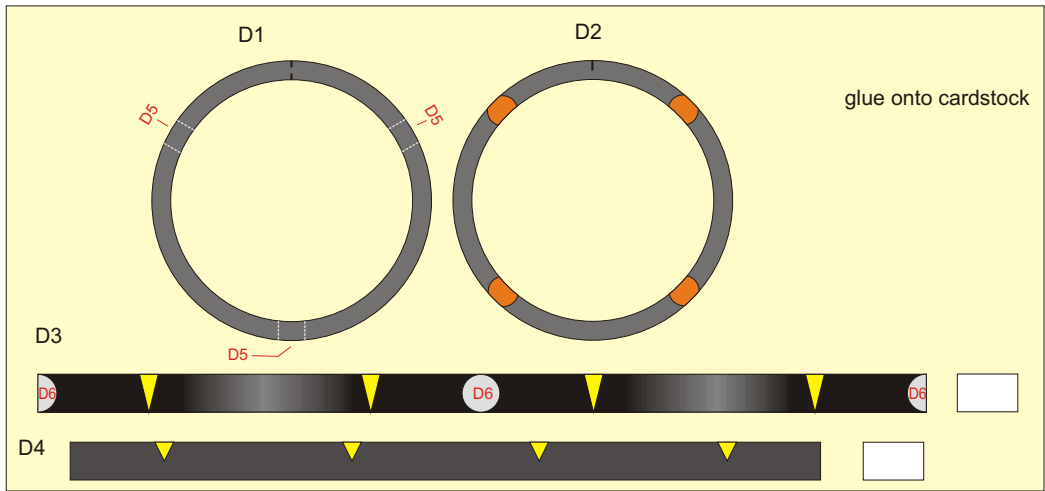


- 1 - glue tube w5 and supporting strips w6,
- 2 - glue w1 and w2
- 3 - assembly w3 and w4
- then glue w3/w4 onto ledge w1/w2
- 4 - haft and glue wheels on w5

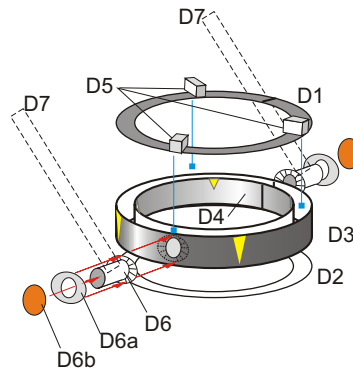


C1d See assembling on p.8

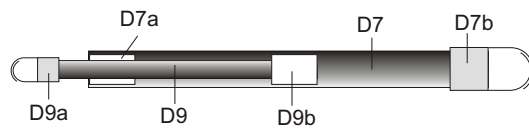
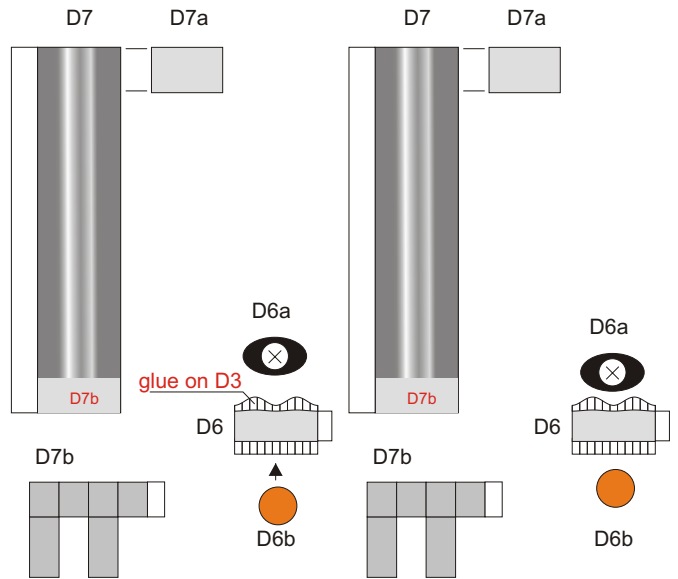
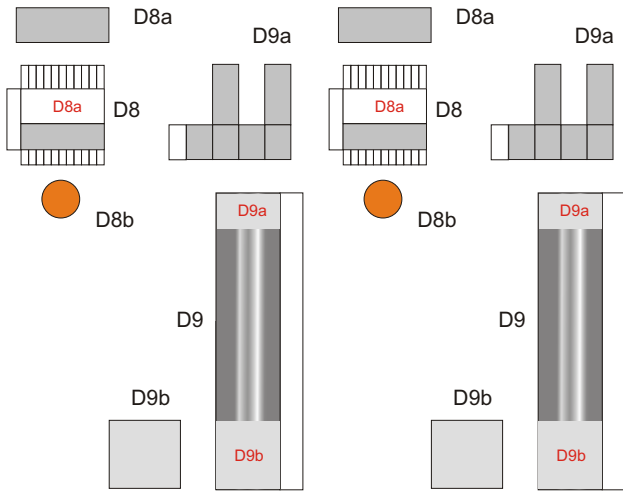




hole for part a19
(see page 3
of Tsyklon-3 kit or
page 6 of Tsyklon-4 kit)

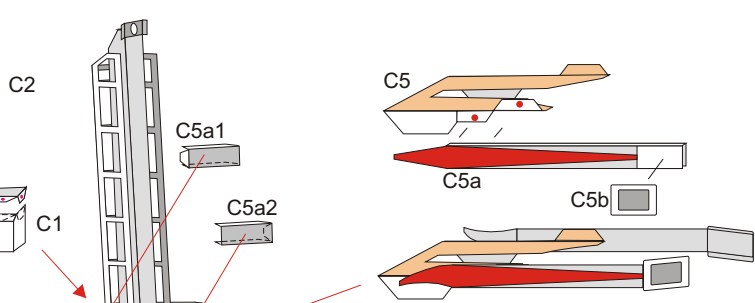


assembling of D8 and C1
see next page

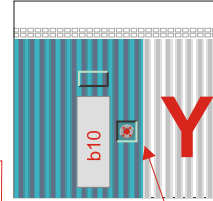


Part B

Part C

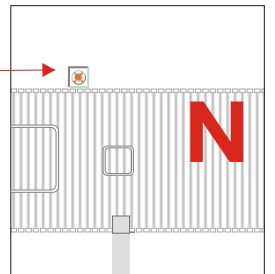


b5 of Tsyklon kit

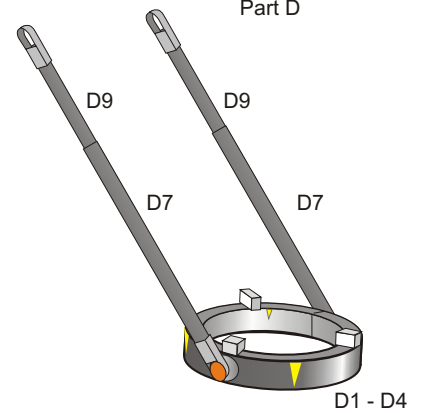


option
 "Fuel lines"
 Run two covered wires
 ($d = 2 - 3 \text{ mm}$)
 through clamps
 from upper cutoff point
 of Tsyklon and
 bottom cutoff point.
 Fix wires on bottom
 of part C.

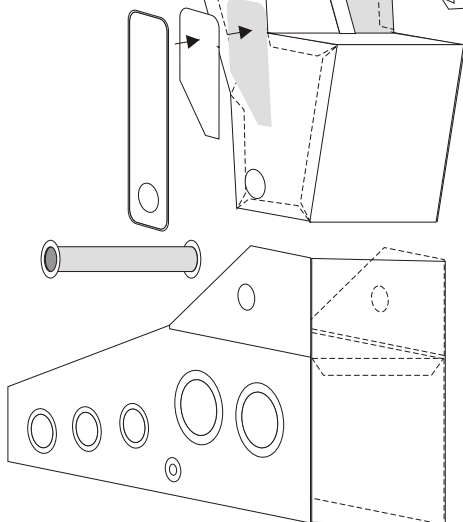
a4 of Tsyklon kit



Part D



Part A



C1d