

Transport Interface - Section 3P

10 cm

3Pa

3Pc

3Pd

3Pf

3Pg

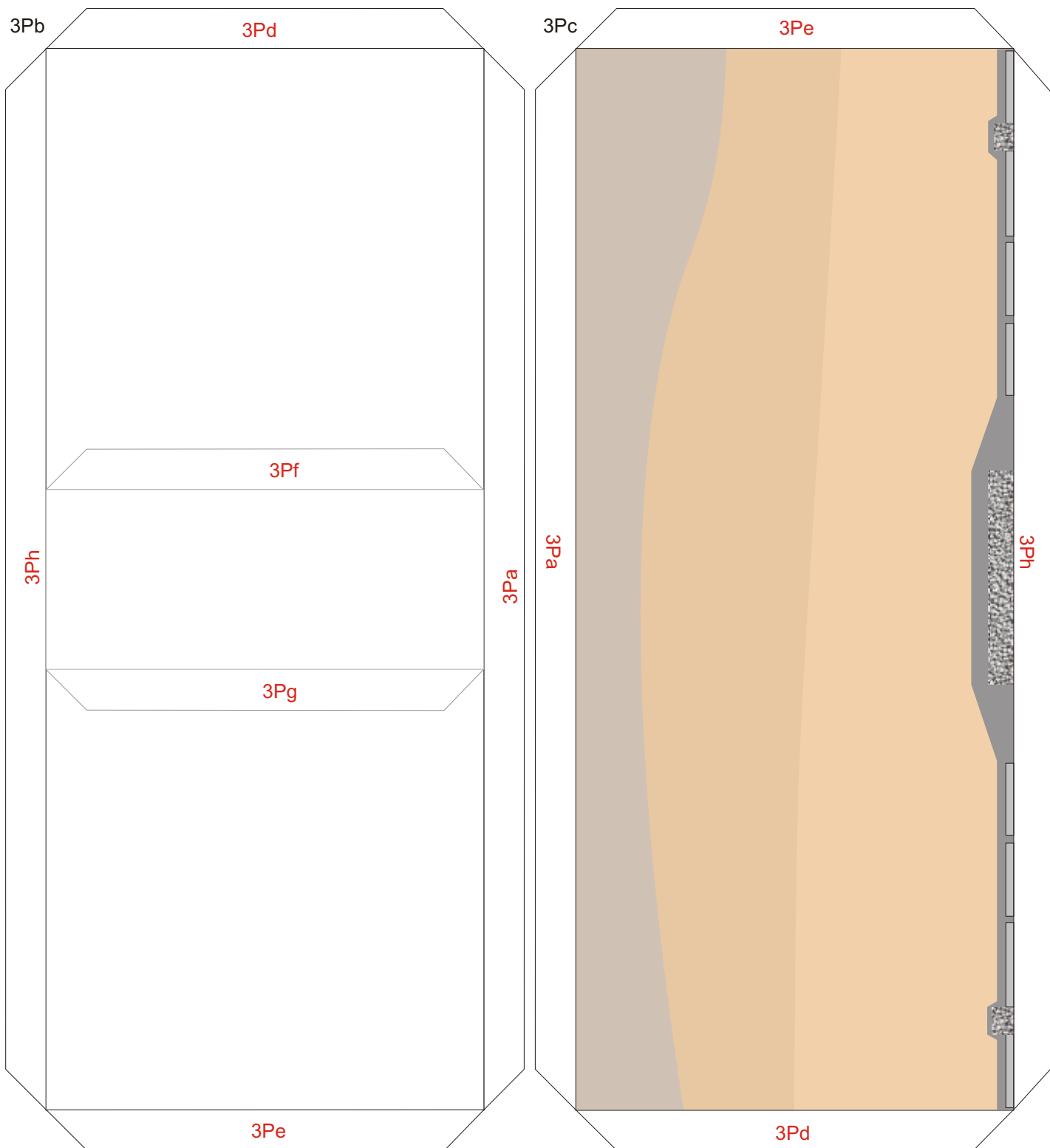
3Pe

3Pb

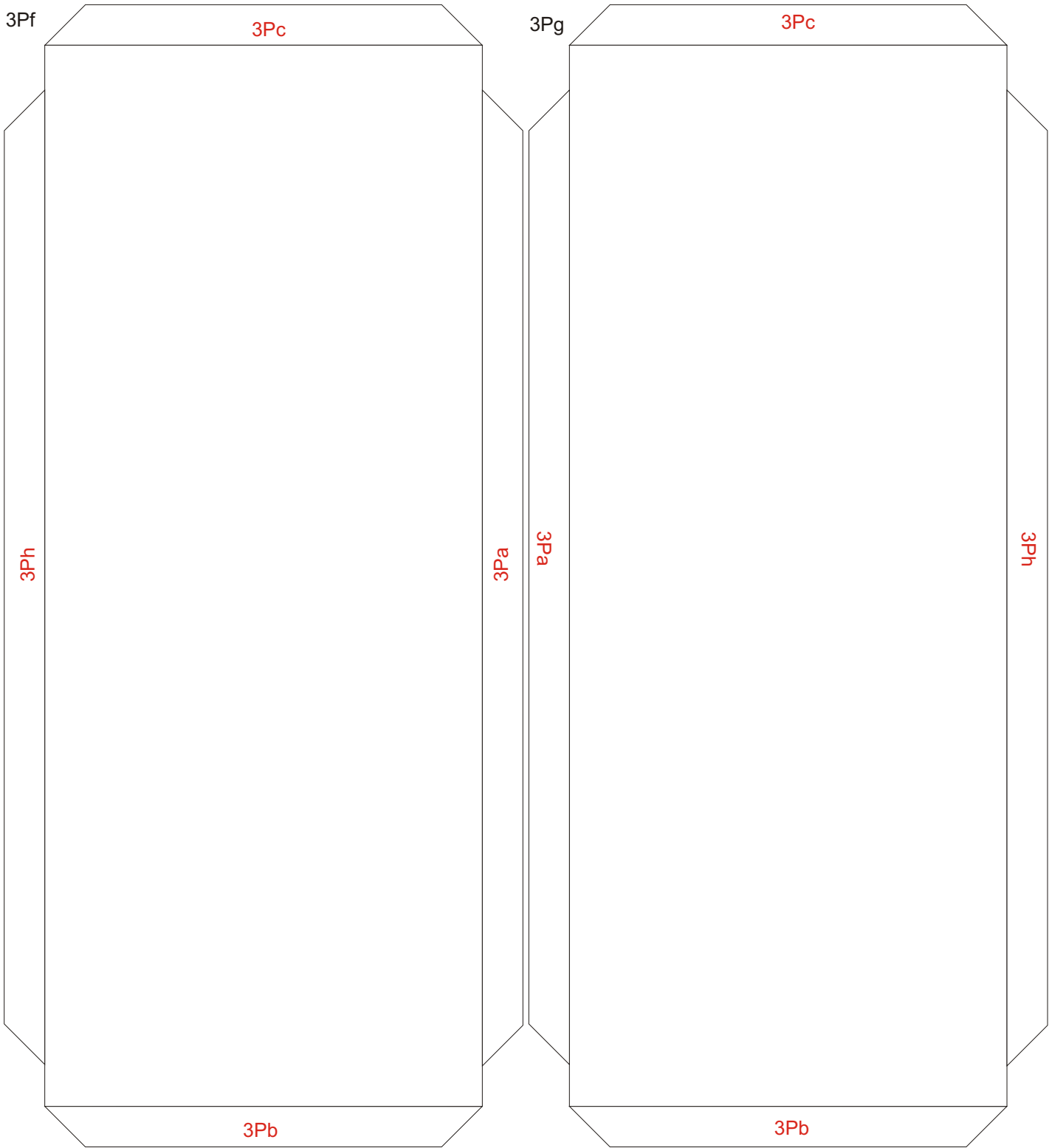
2P

Transport Interface - Section 3P

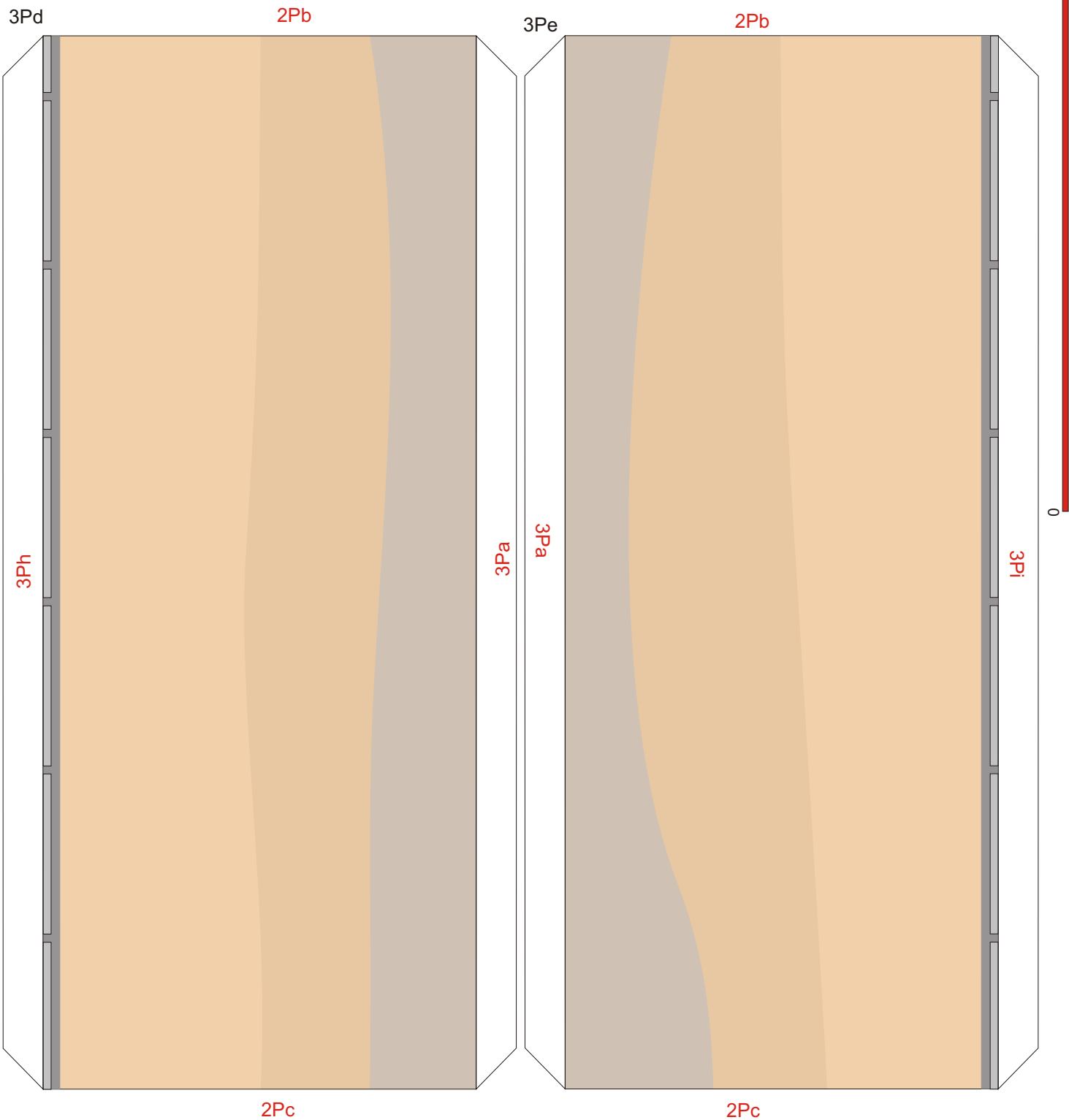
back side of part 3Pb is outside of Section 3P



Transport Interface - Section 3P



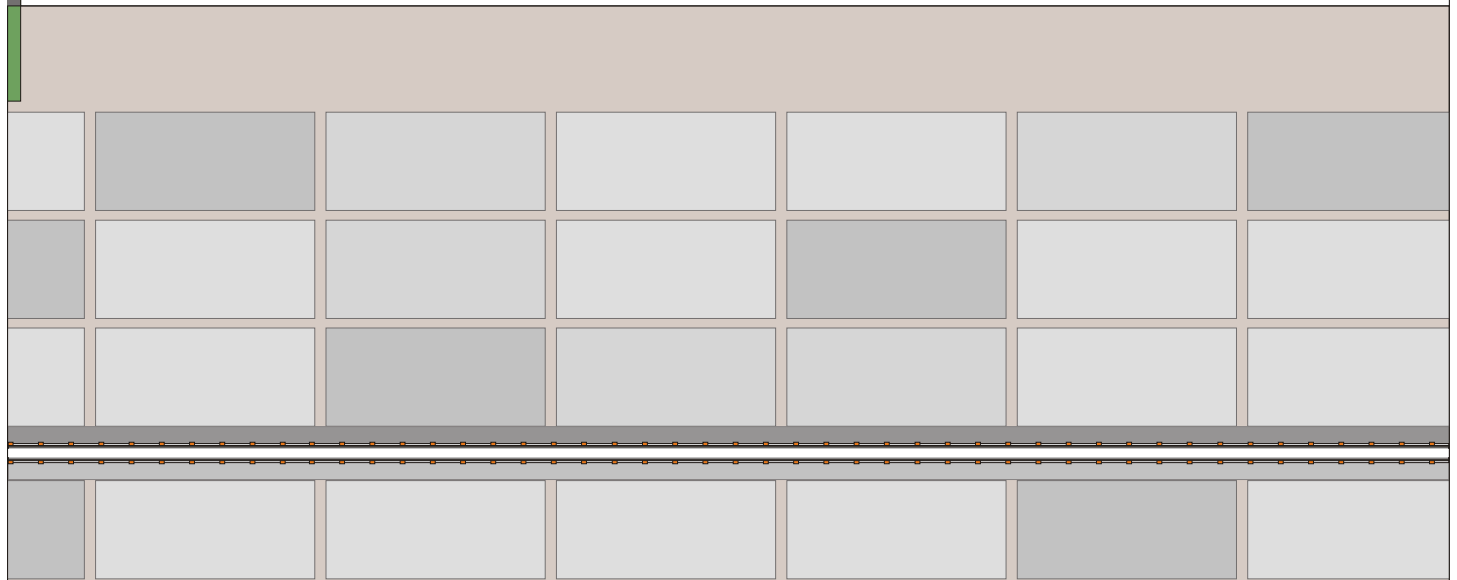
Transport Interface - Section 3P





2P ←

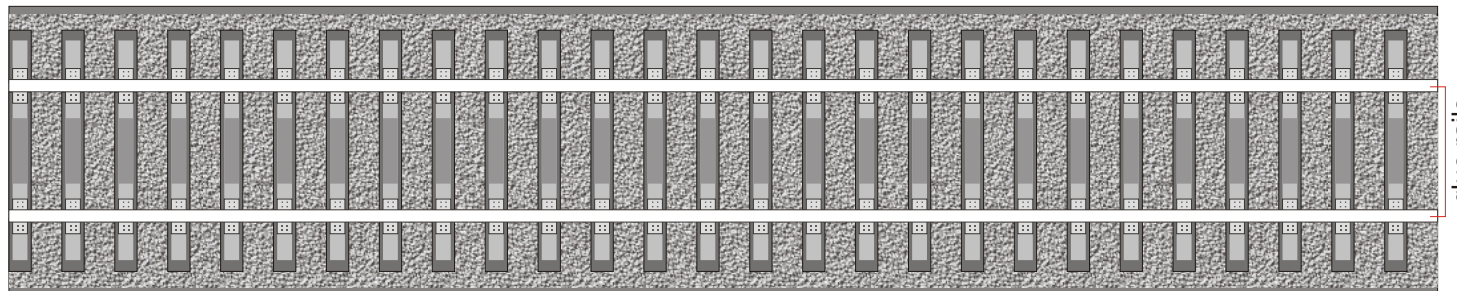
3Pi



3Pi

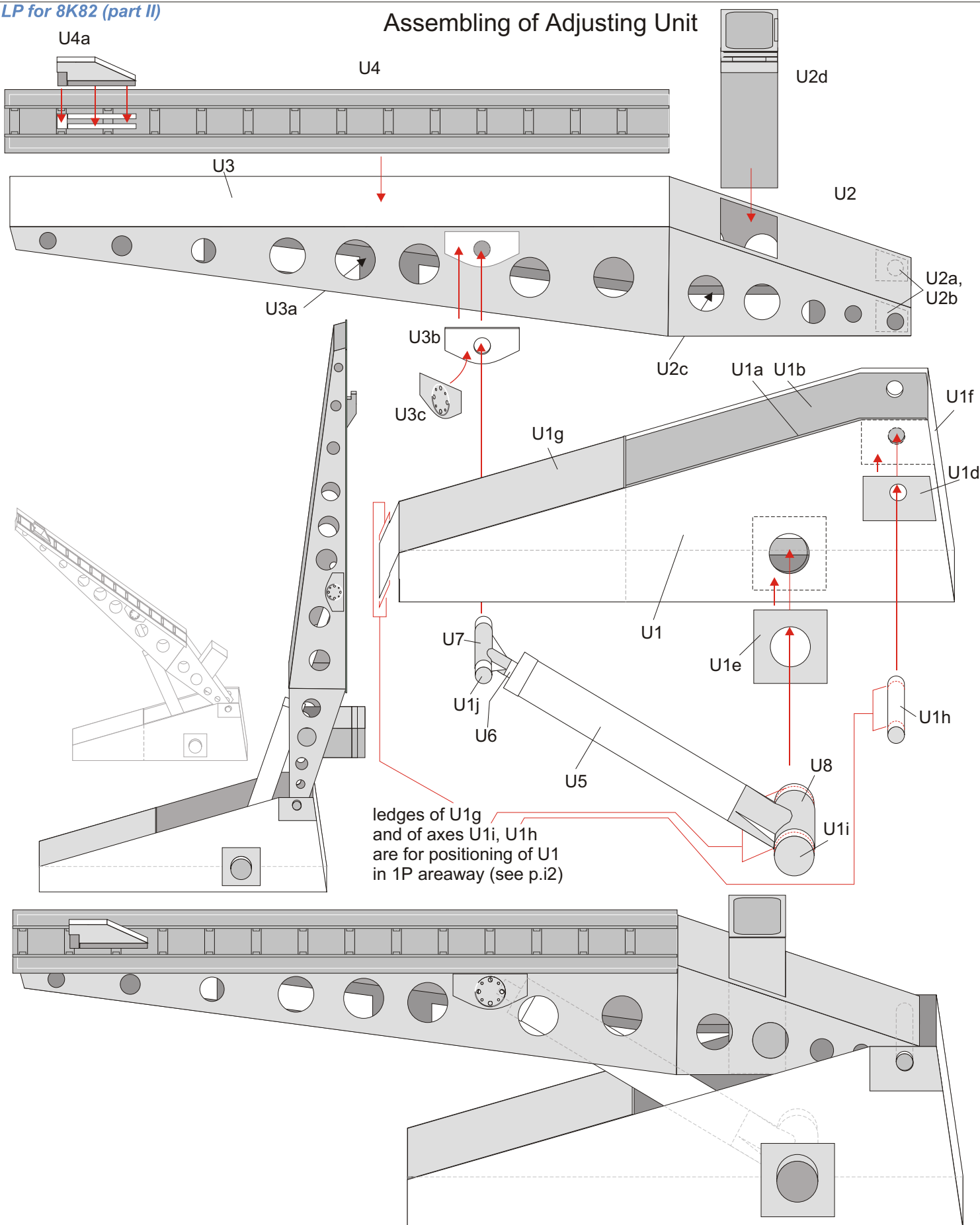
2P ←

3Pe

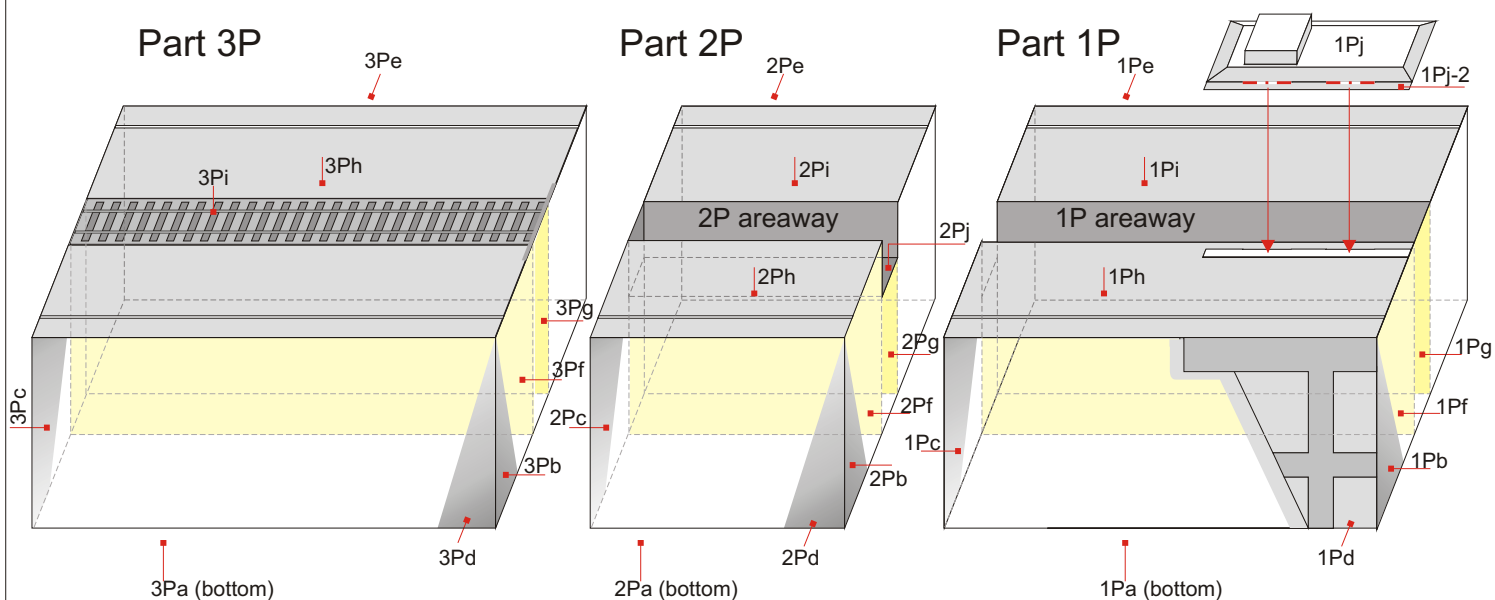


rails

Assembling of Adjusting Unit



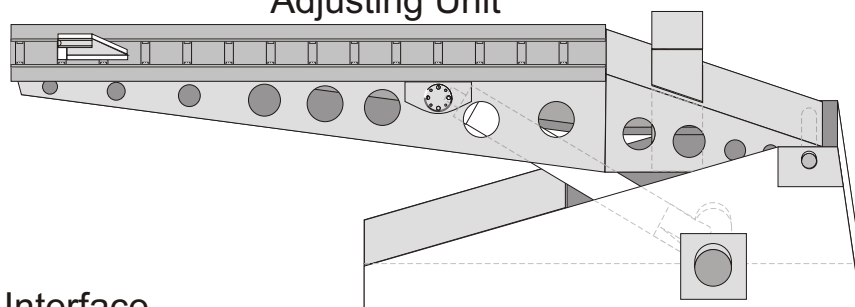
Assembling of Transport Interface



Glue parts 1P, 2P and 3P then assembly Transport Interface as shown below.

Glue Adjusting Unit into 1P areaway.

Adjusting Unit



Transport Interface

