

Launch Pad

for Proton family

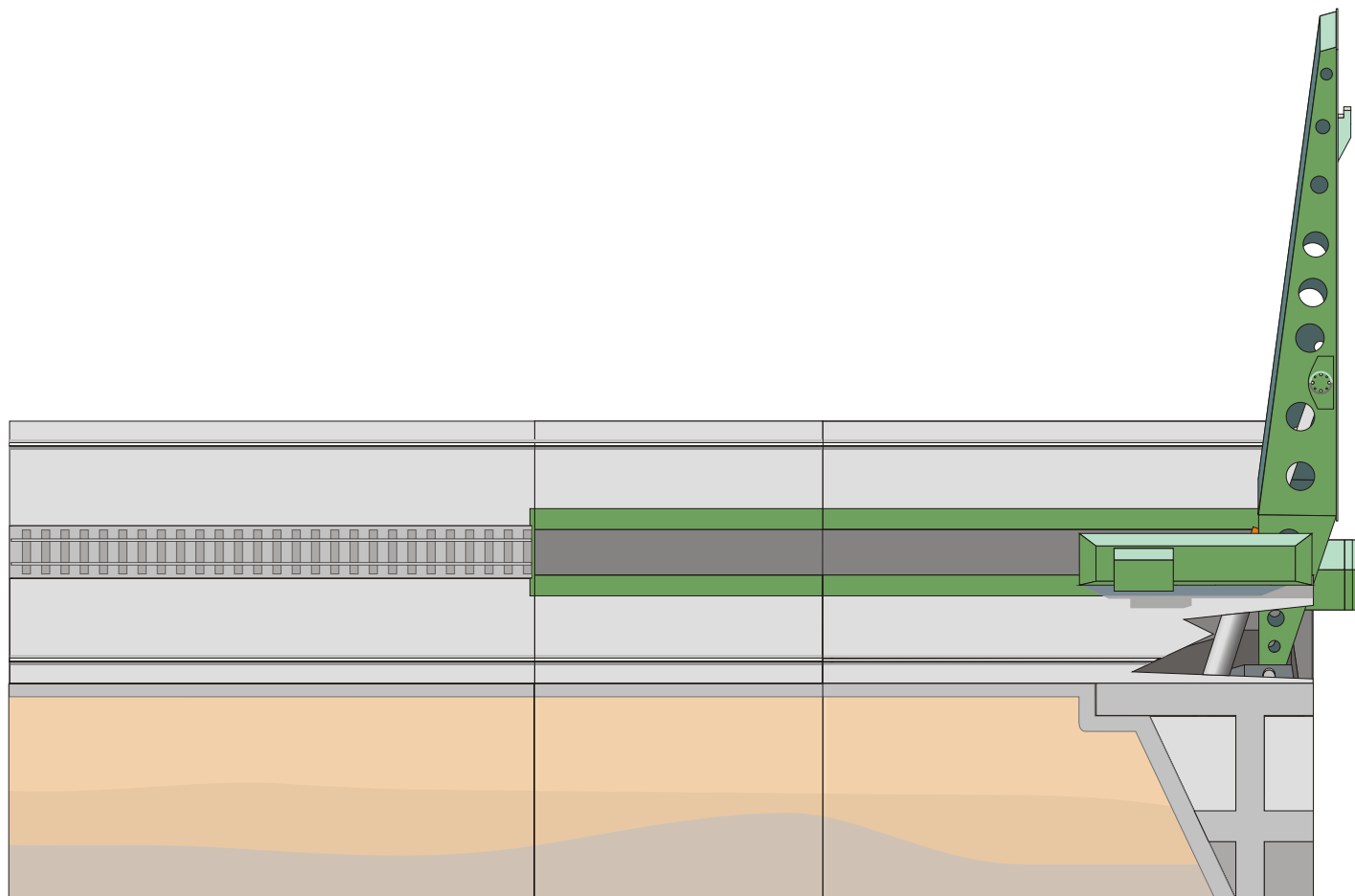
1:96 scale

Project Part II - Adjusting Unit

Пусковая установка
для РН семейства Протон

масштаб 1:96

Часть II - Установщик



Paper used:

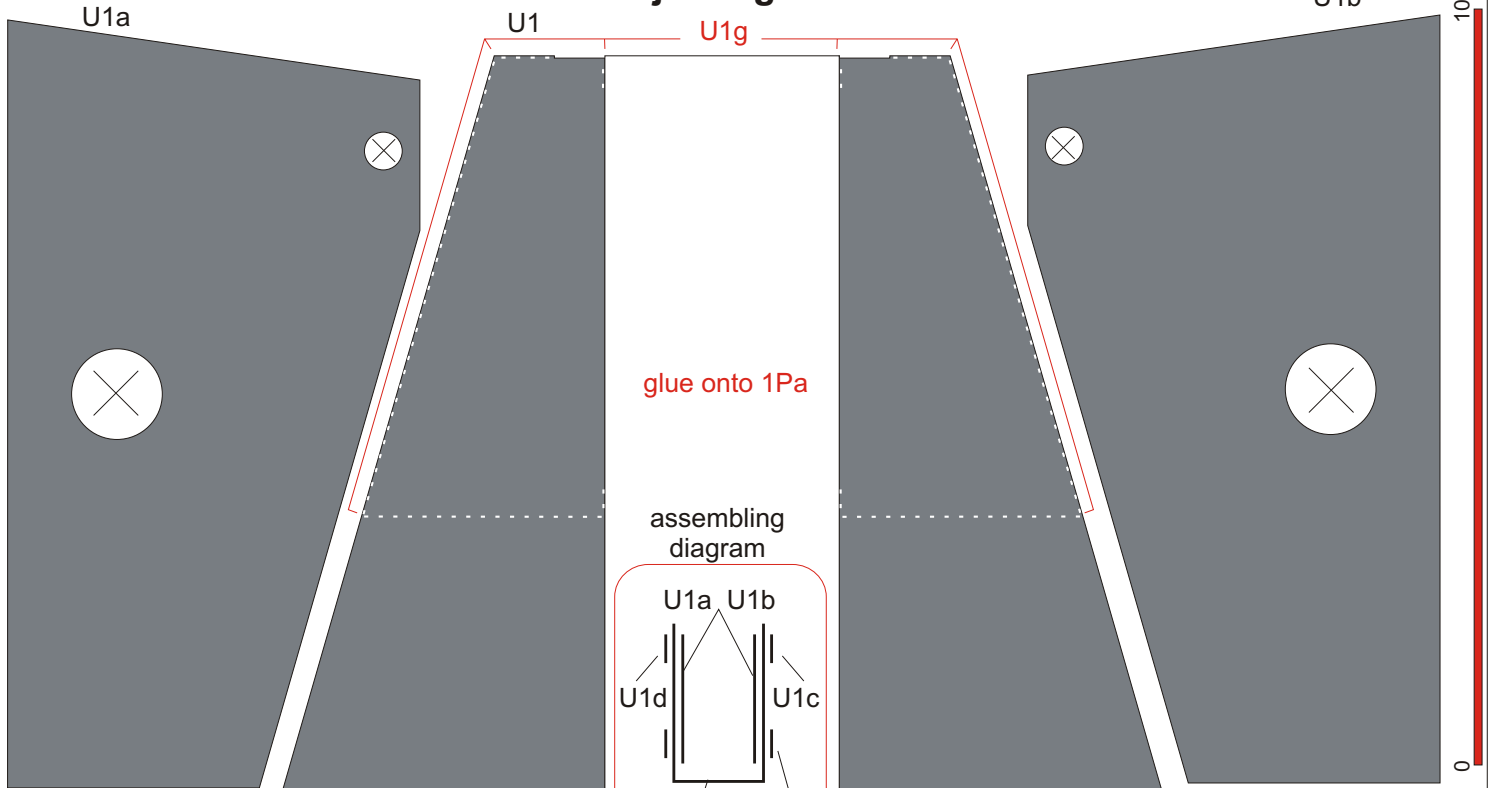
0,26 mm - 200 gr ("cardstock")

Glue: PVA

Many thanks to Joe Polchlopek for the test-building!

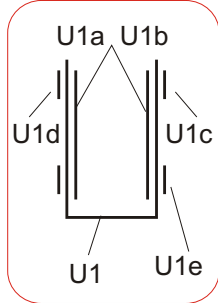
Adjusting unit

10 cm



glue onto 1Pa

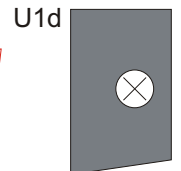
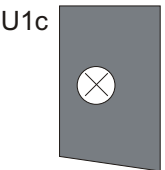
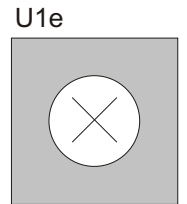
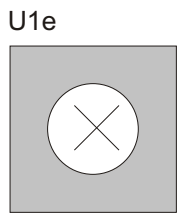
assembling diagram



glue back side of U1b onto back side of U1

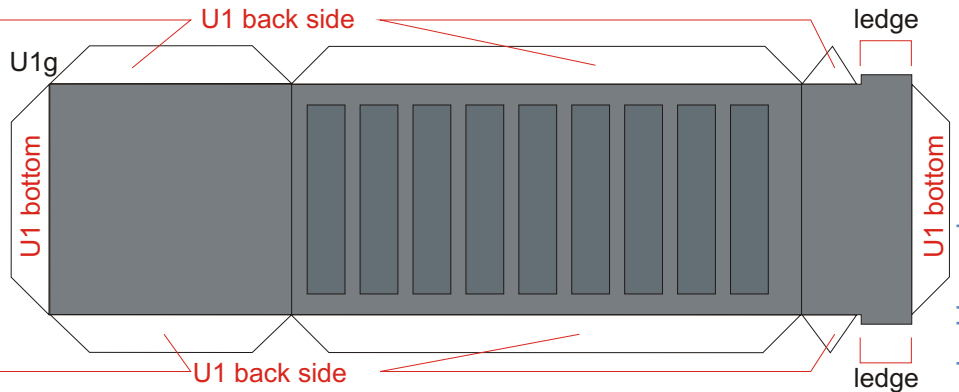
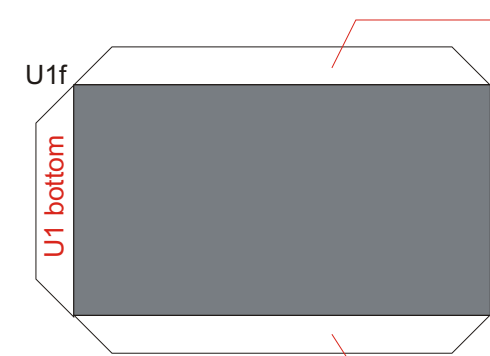
glue back side of U1a onto back side of U1

holes for U1i



hole for U1h

hole for U1h



Adjusting unit

10 cm

